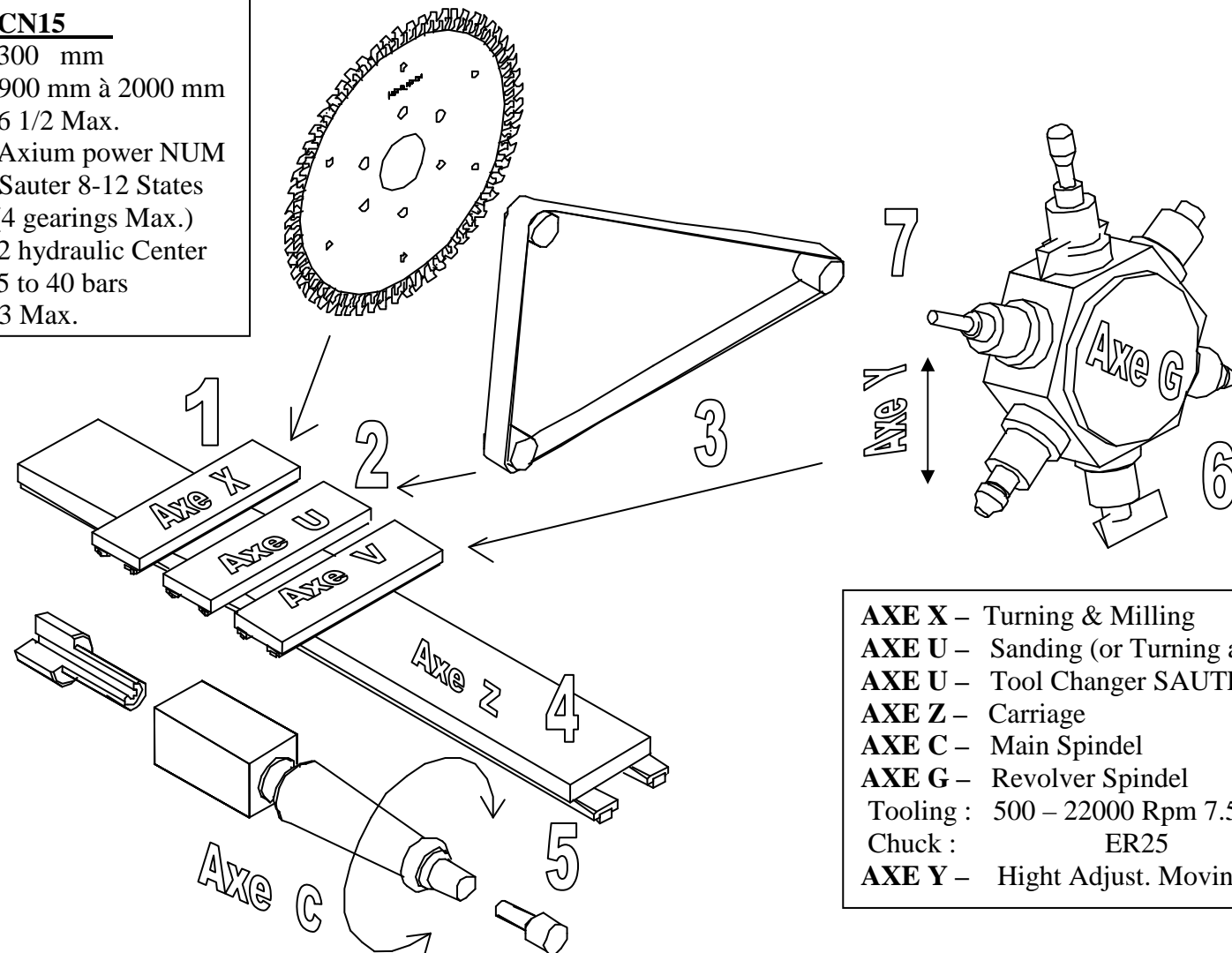


Multi-function machine HEMPEL CN15

MACHINE	CN15
Ø Maxi :	300 mm
Length of turning :	900 mm à 2000 mm
Nbres Axis:	6 1/2 Max.
CN :	Axium power NUM
Tool changer :	Sauter 8-12 States (4 gears Max.)
Hopper Feed :	2 hydraulic Center
Hydraulic Clamping :	5 to 40 bars
Spindel CNC :	3 Max.



AXE X – Turning & Milling	(1)
AXE U – Sanding (or Turning add.)	(2)
AXE U – Tool Changer SAUTER	(3)
AXE Z – Carriage	(4)
AXE C – Main Spindel	(5)
AXE G – Revolver Spindel	(6)
Tooling : 500 – 22000 Rpm 7.5Nm	
Chuck : ER25	
AXE Y – Height Adjust. Moving	(7)